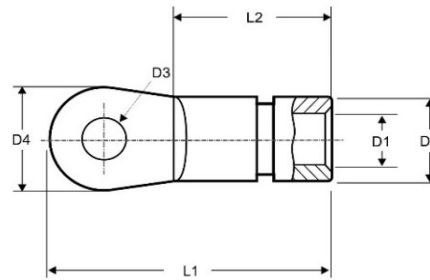


engstKABELCONNECT® Aluminium Presskabelschuh (PKS) verzinkt



Beschreibung

Aluminium Presskabelschuh (PKS) kurz, verzinkt, längsdicht
 ähnlich DIN 46329 zur ausschließlichen Verwendung für ALUKAFLEX®-Leitungen
 mit feindrähtigen Klasse 5 Al-Leitern.
 Mit umlaufender Positionshilfe (Nut)
 Hülse mit Kontaktfett gefüllt

Aufbau und Technische Daten

| Artikelnummer | Querschnitt rf mm ² | Leiter- querschnitt mm ² | Bohrung | | Abmessungen in mm (+/- 0,2 mm) | | | | | VPE |
|---------------|--------------------------------------|---|---------|------|-----------------------------------|------|------|------|------|-----|
| | | | M | L1 | L2 | D1 | D2 | D3 | D4 | |
| 95501608 | 16 | 16 | 8,0 | 50,5 | 23,5 | 6,3 | 12,0 | 8,4 | 25,0 | 25 |
| 95501610 | 16 | 16 | 10,0 | | | | | 10,5 | | 25 |
| 95502510 | 25 | 25 | 10,0 | 56,0 | 28,5 | 7,7 | 14,0 | 10,5 | 25,0 | 25 |
| 95503510 | 35 | 35 | 10,0 | 58,0 | 30,5 | 9,6 | 16,0 | 10,5 | 25,0 | 25 |
| 95503512 | 35 | 35 | 12,0 | | | | | 13,0 | | 25 |
| 95505010 | 50 | 50 | 10,0 | 62,0 | 35,5 | 10,9 | 18,5 | 10,5 | 25,0 | 10 |
| 95505012 | 50 | 50 | 12,0 | | | | | 13,0 | | 10 |
| 95507010 | 70 | 70 | 10,0 | 65,0 | 36,0 | 13,2 | 22,0 | 10,5 | 25,0 | 10 |
| 95507012 | 70 | 70 | 12,0 | | | | | 13,0 | | 10 |
| 95509510 | 95 | 95 | 10,0 | 70,5 | 38,0 | 14,7 | 23,0 | 10,5 | 30,0 | 10 |
| 95509512 | 95 | 95 | 12,0 | | | | | 13,0 | | 10 |
| 95512010 | 120 | 120 | 10,0 | 76,0 | 43,0 | 16,3 | 25,0 | 10,5 | 30,0 | 5 |
| 95512012 | 120 | 120 | 12,0 | | | | | 13,0 | | 5 |
| 95515010 | 150 | 150 | 10,0 | 77,5 | 44,0 | 18,7 | 28,5 | 10,5 | 30,0 | 5 |
| 95515012 | 150 | 150 | 12,0 | | | | | 13,0 | | 5 |
| 95518512 | 185 | 185 | 12,0 | 92,5 | 52,0 | 20,0 | 32,0 | 13,0 | 38,0 | 4 |
| 95524012 | 240 | 240 | 12,0 | 93,5 | 53,2 | 23,1 | 32,0 | 13,0 | 38,0 | 4 |